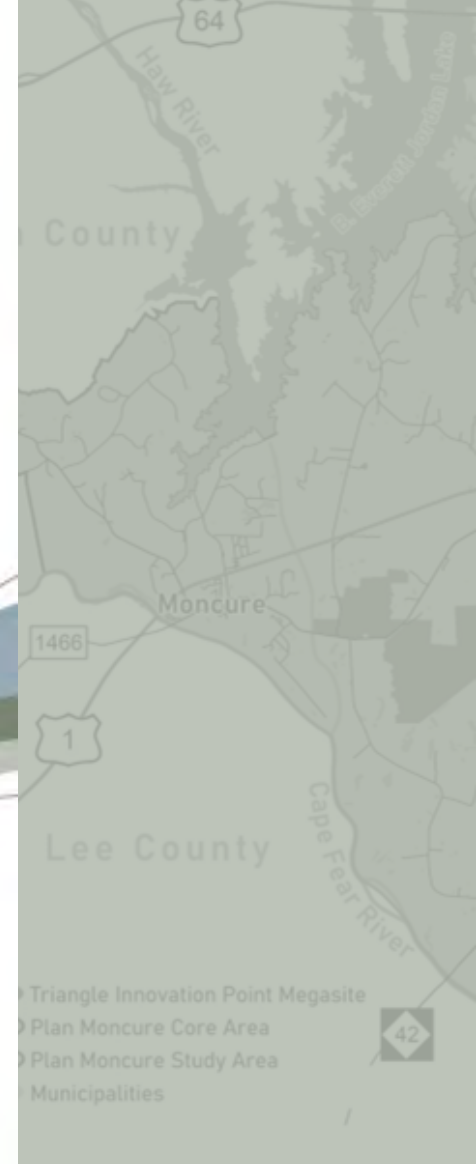


PROJECT MAPS

11.16.2023



RECODE | PLAN
CHATHAM | MONCURE

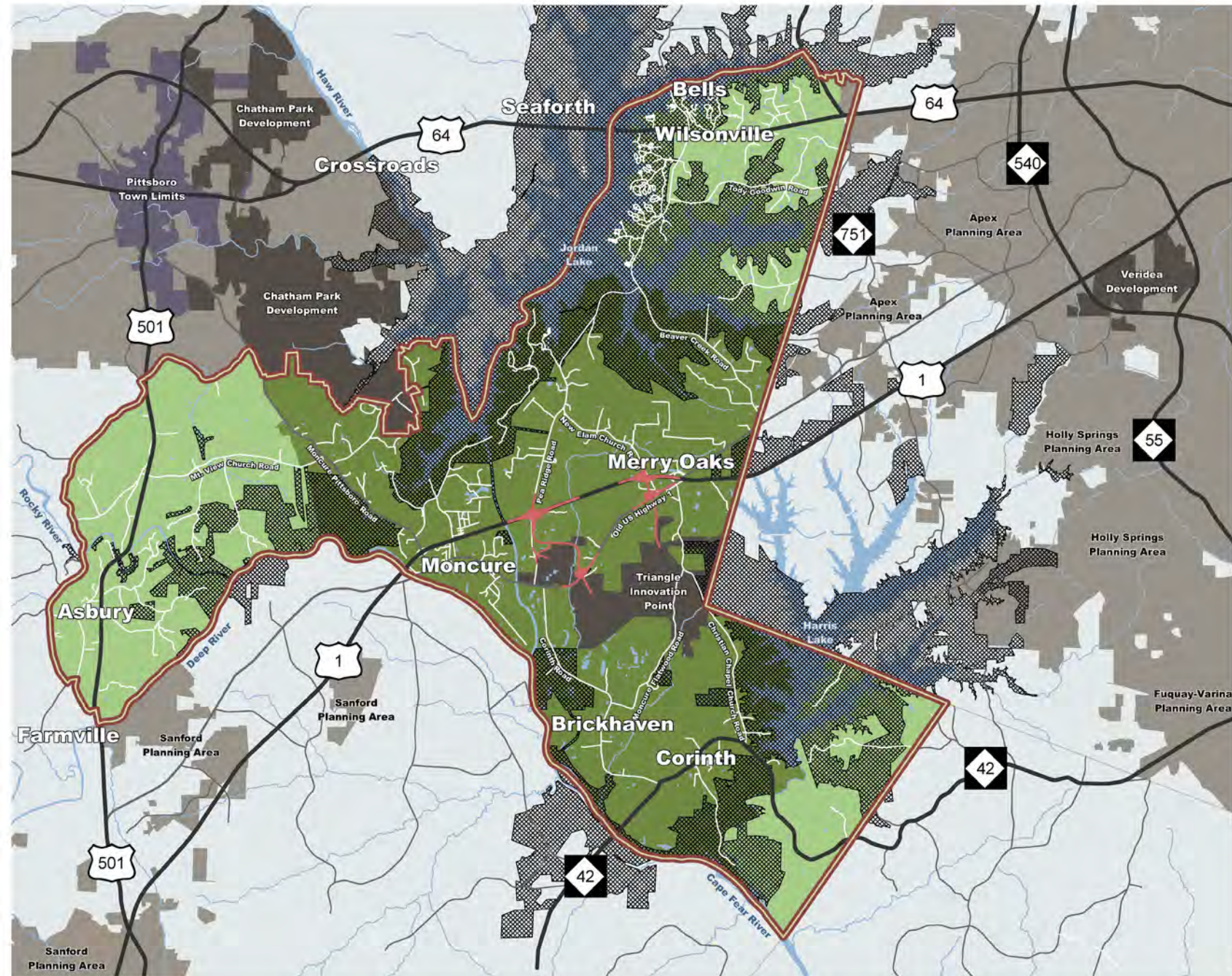
General Base Map

-  Road Improvements Underway
-  Unincorporated County
-  Pittsboro Town Limits
-  Town Planning Area
-  Major Activity Center
-  Moncure Small Area Plan Study Area
-  Moncure Small Area Plan Focus Area
-  Water Body
-  Managed Land Area (Open Space)

March 13, 2023



NORTH



RECODE | PLAN
CHATHAM | MONCURE

Managed & Protected Lands

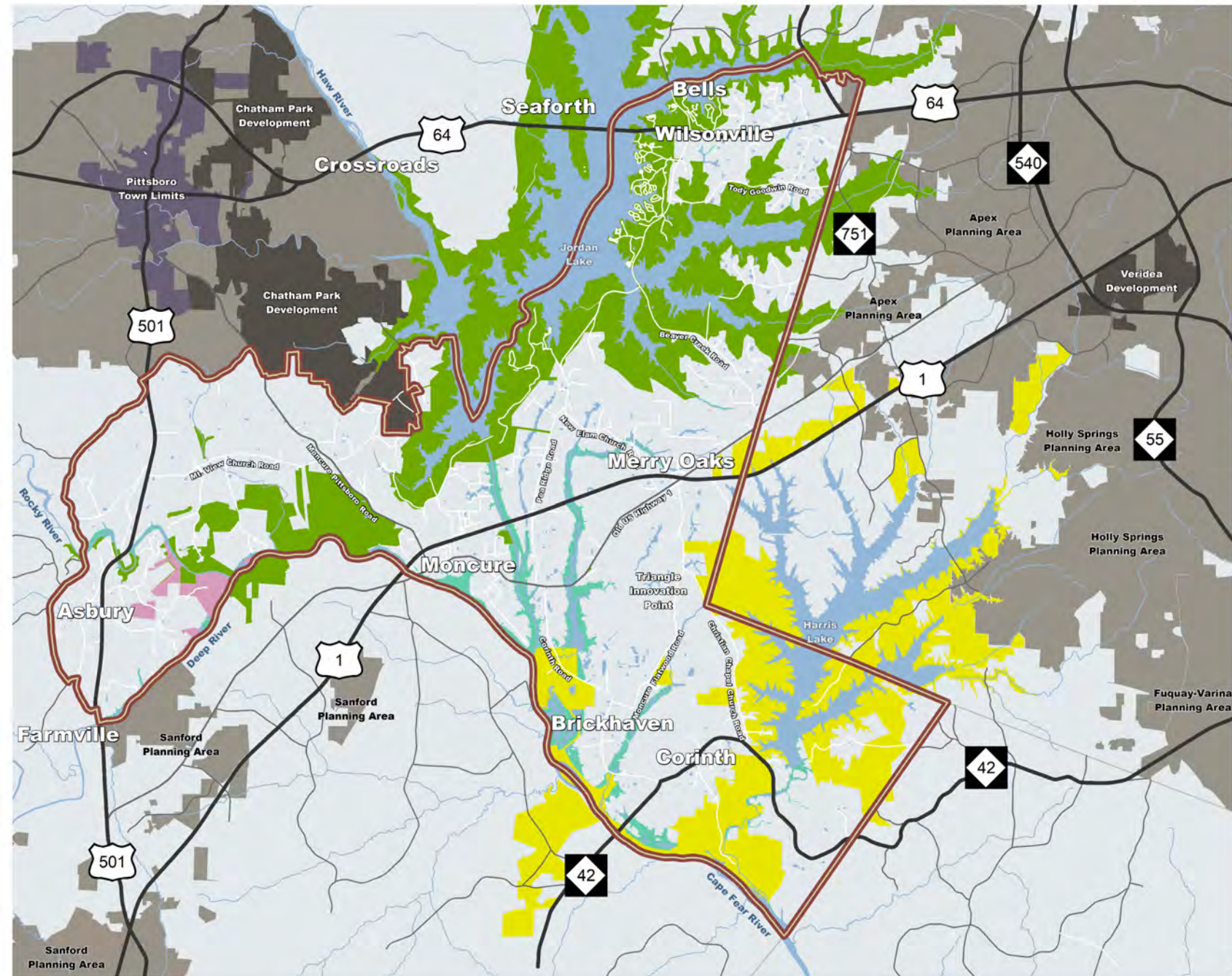
- Water or Wetland
- Floodplain
- Game Lands
- Private Protected Lands
- Government Owned Protected Lands

- Unincorporated County
- Pittsboro Town Limits
- Town Planning Area
- Major Activity Center

March 15, 2023



NORTH

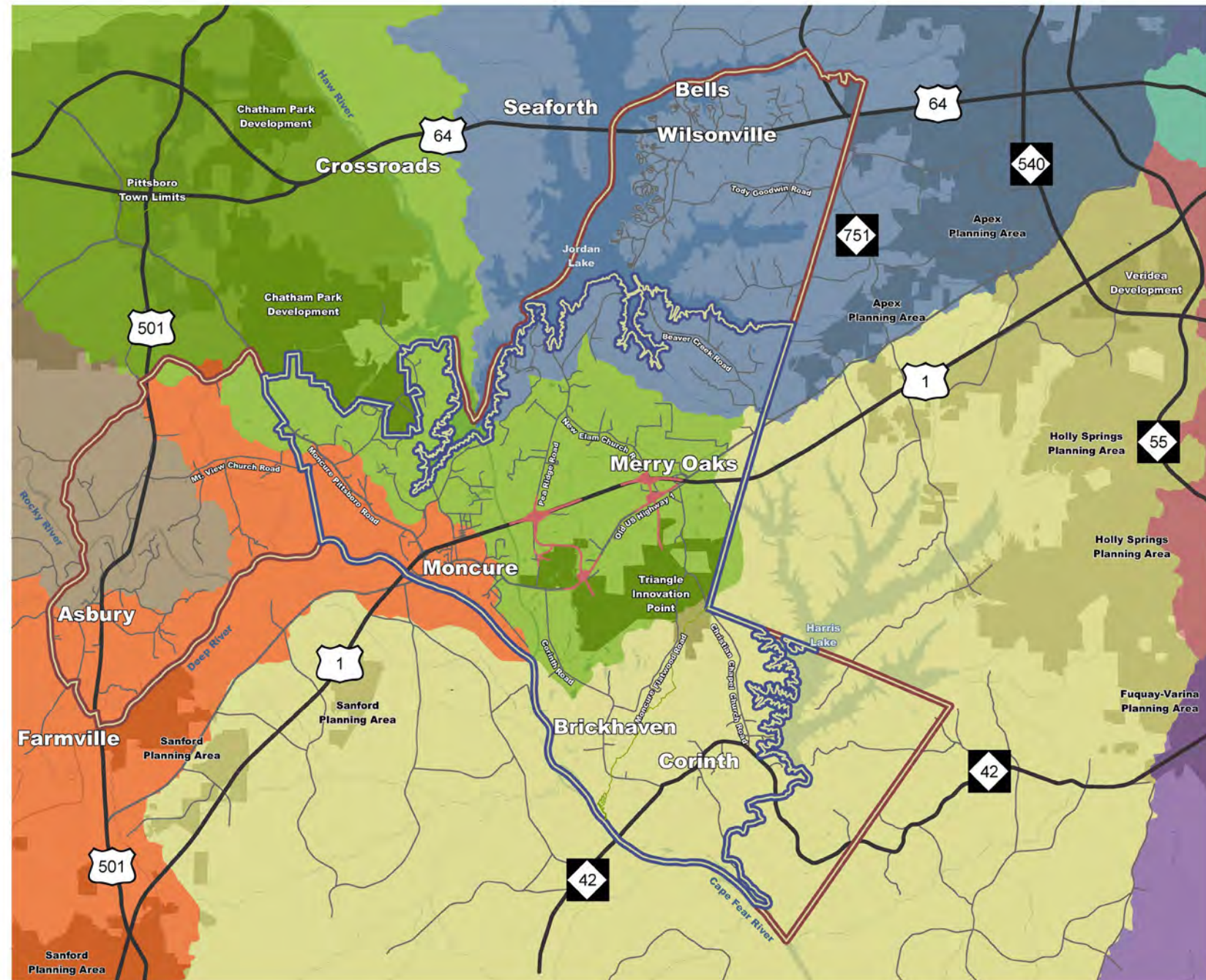


Major Watersheds Map
 Ten-Digit Hydrologic Unit Code

- Road Improvements Underway
- Major Activity Center
- Town Planning Area
- Water Body
- Moncure Small Area Plan Study Area
- Moncure Small Area Plan Focus Area
- Roberson Creek-Haw River Watershed
- B Everett Jordan Lake-New Hope River
- Buckhorn Creek-Cape Fear River Watershed
- Lower Deep River Watershed
- Rocky River Watershed
- Swift Creek Watershed
- Middle Creek Watershed
- Buies Creek-Cape Fear River Watershed



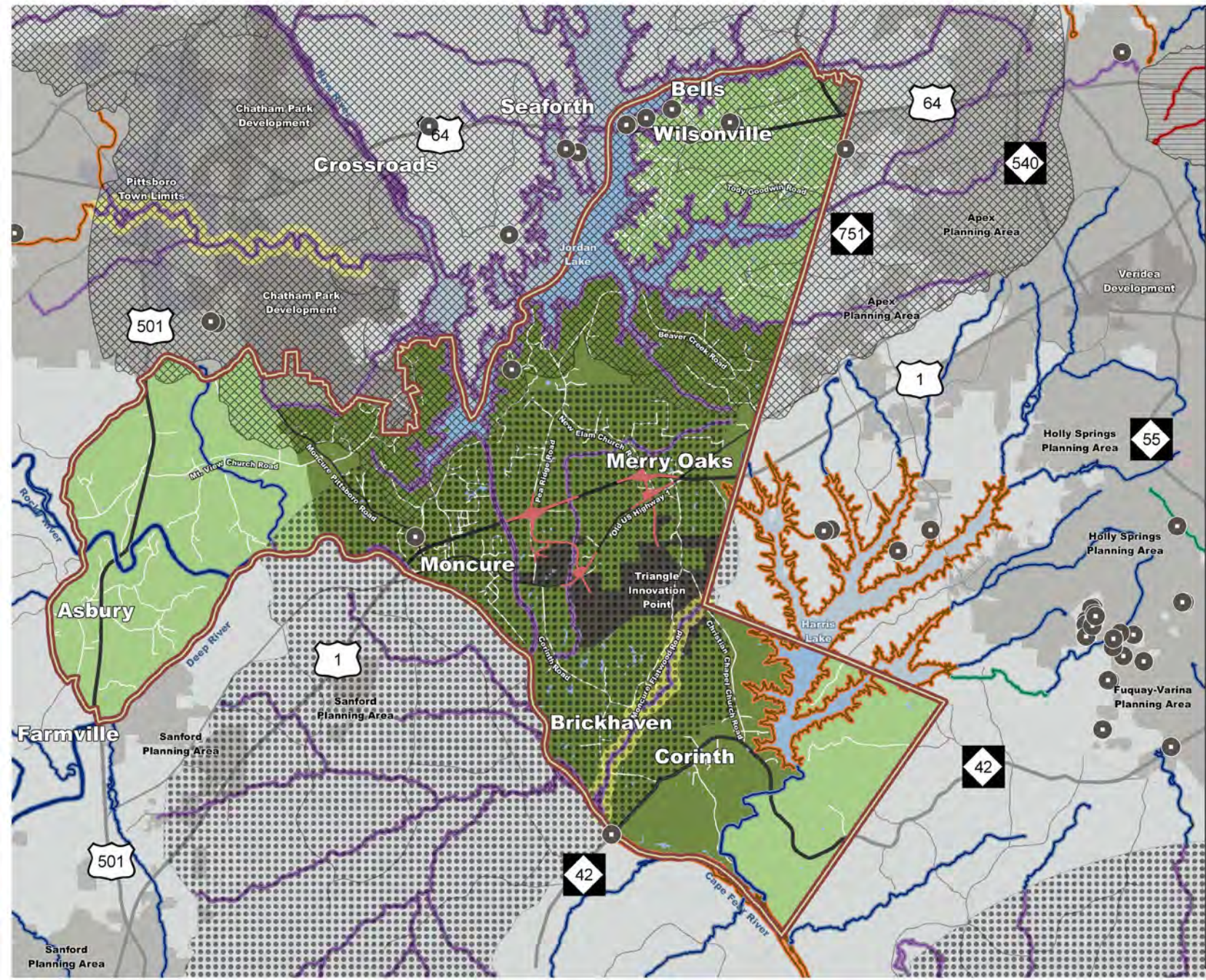
March 13, 2023



Surface Water
Classifications Map

-  Road Improvements Underway
-  Major Activity Center
-  Town Planning Area
-  Water Body
-  Moncure Small Area Plan Study Area
-  Moncure Small Area Plan Focus Area
-  Class B Stream or Water Body
-  Class C Stream or Water Body
-  Class WS-II Stream or Water Body
-  Class WS-III Stream or Water Body
-  Class WS-IV Stream or Water Body
-  Class V Stream or Water Body
-  303-D Stream Classification
-  Class WS-IV Water Supply Watershed
-  Class WS-IV Water Supply Watershed, Neuse River Basin Rules
-  Class WS-III Water Supply Watershed, Neuse River Basin Rules
-  Public Water Supply Water Source

March 13, 2023



RECODE | PLAN
CHATHAM | MONCURE

Existing Land Use

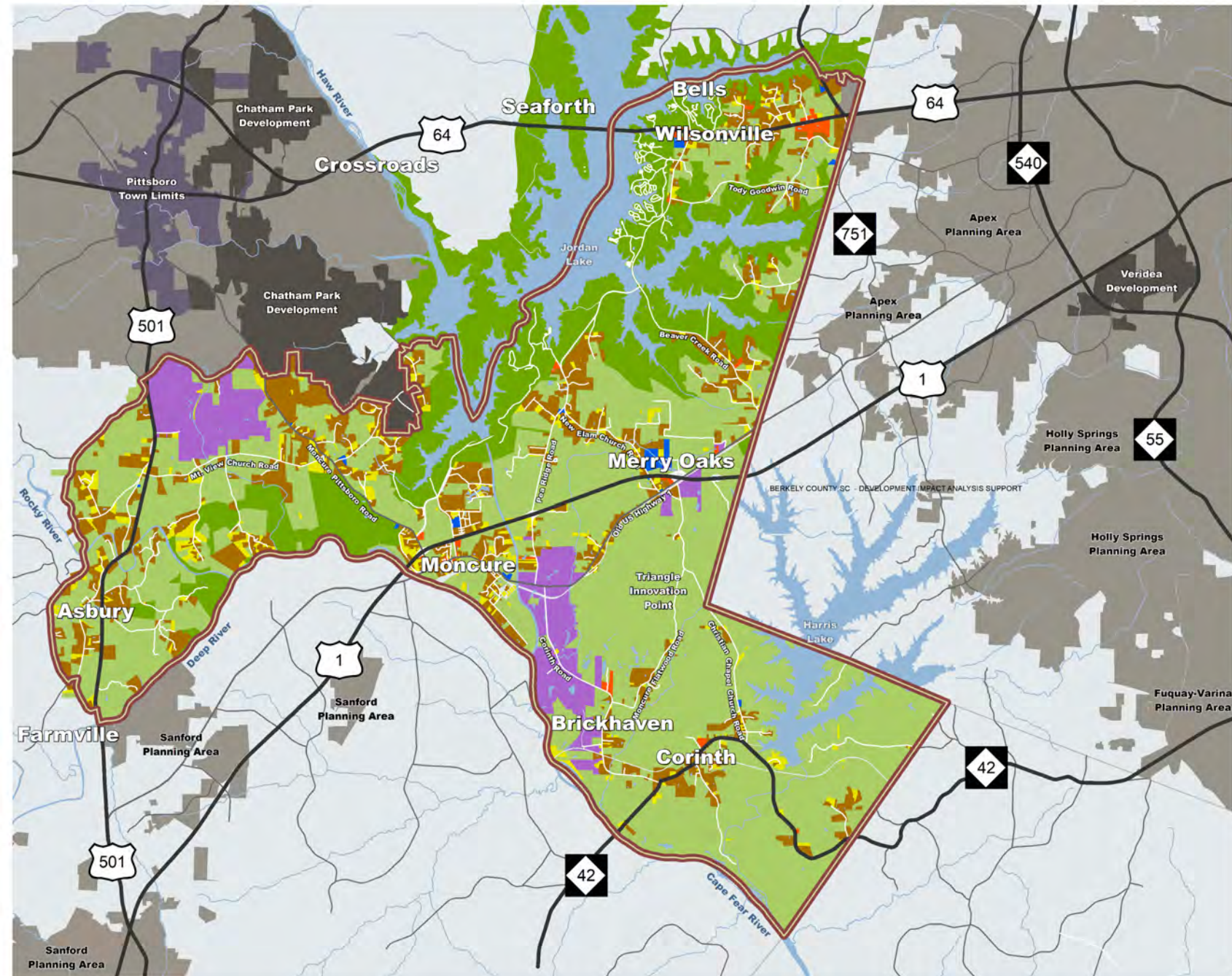
- Business Commercial
- Institutional
- Industrial
- Residential
- Vacant
- Agriculture or Forestry
- Protected

- Unincorporated County
- Pittsboro Town Limits
- Town Planning Area
- Major Activity Center

March 15, 2023



NORTH

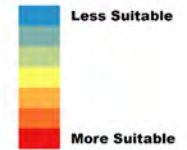


Sanford Planning Area

BERKELY COUNTY, SC - DEVELOPMENT IMPACT ANALYSIS SUPPORT

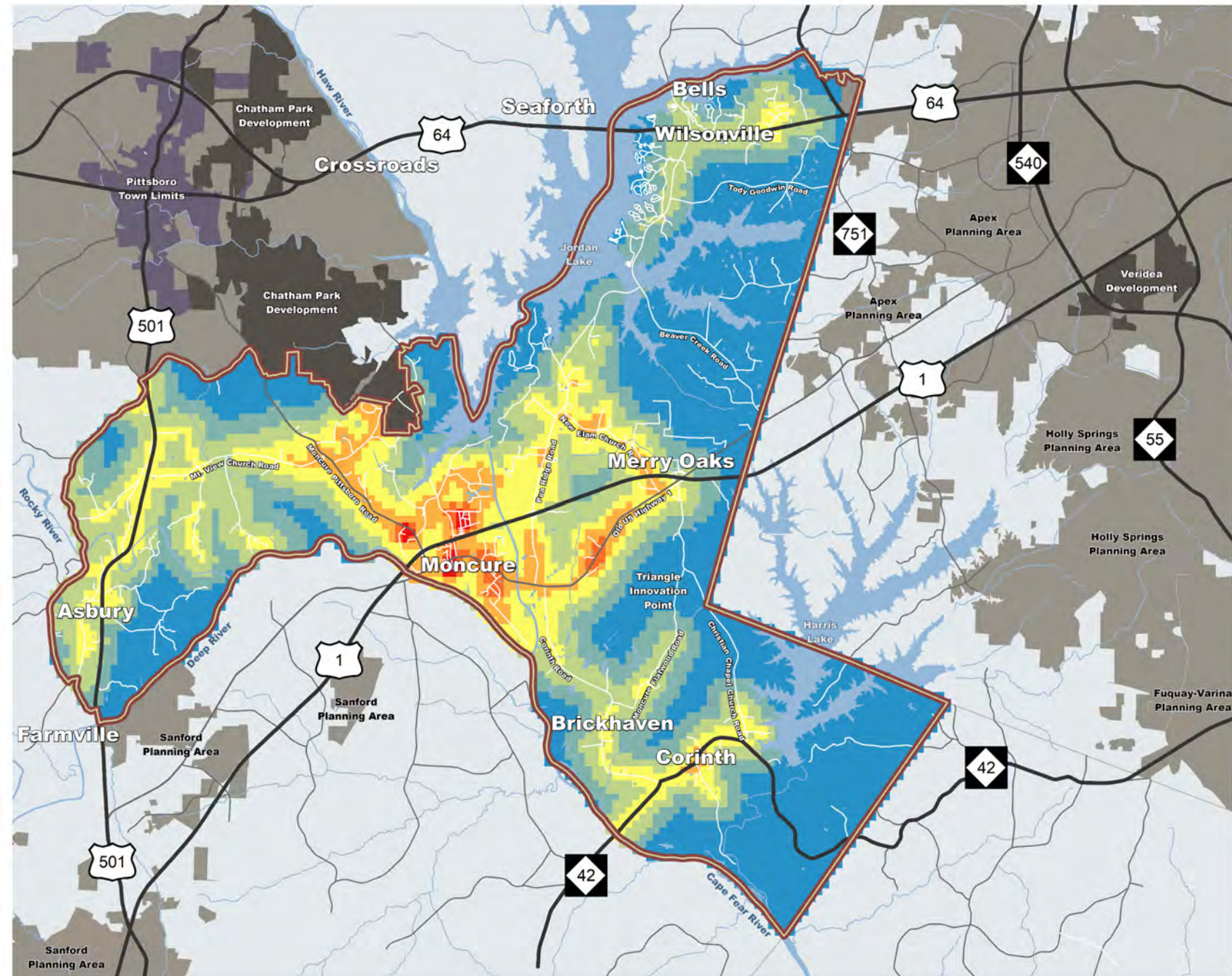
RECODE | PLAN
CHATHAM | MONCURE

Residential Suitability



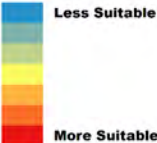
-  Unincorporated County
-  Pittsboro Town Limits
-  Town Planning Area
-  Major Activity Center

March 15, 2023



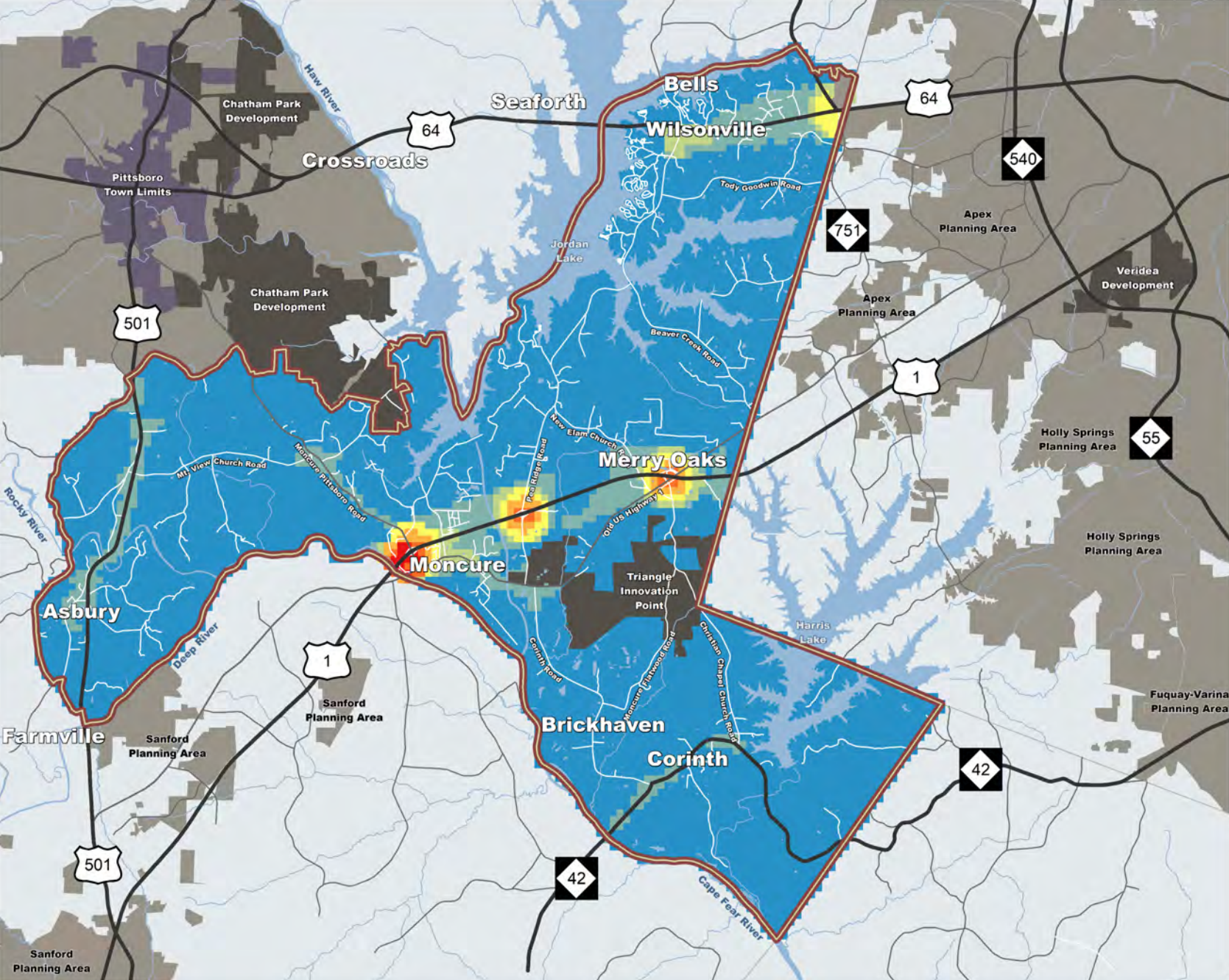
RECODE | PLAN
CHATHAM | MONCURE

Commercial Suitability



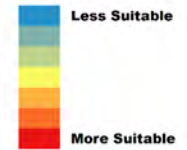
- Unincorporated County
- Pittsboro Town Limits
- Town Planning Area
- Major Activity Center

March 15, 2023



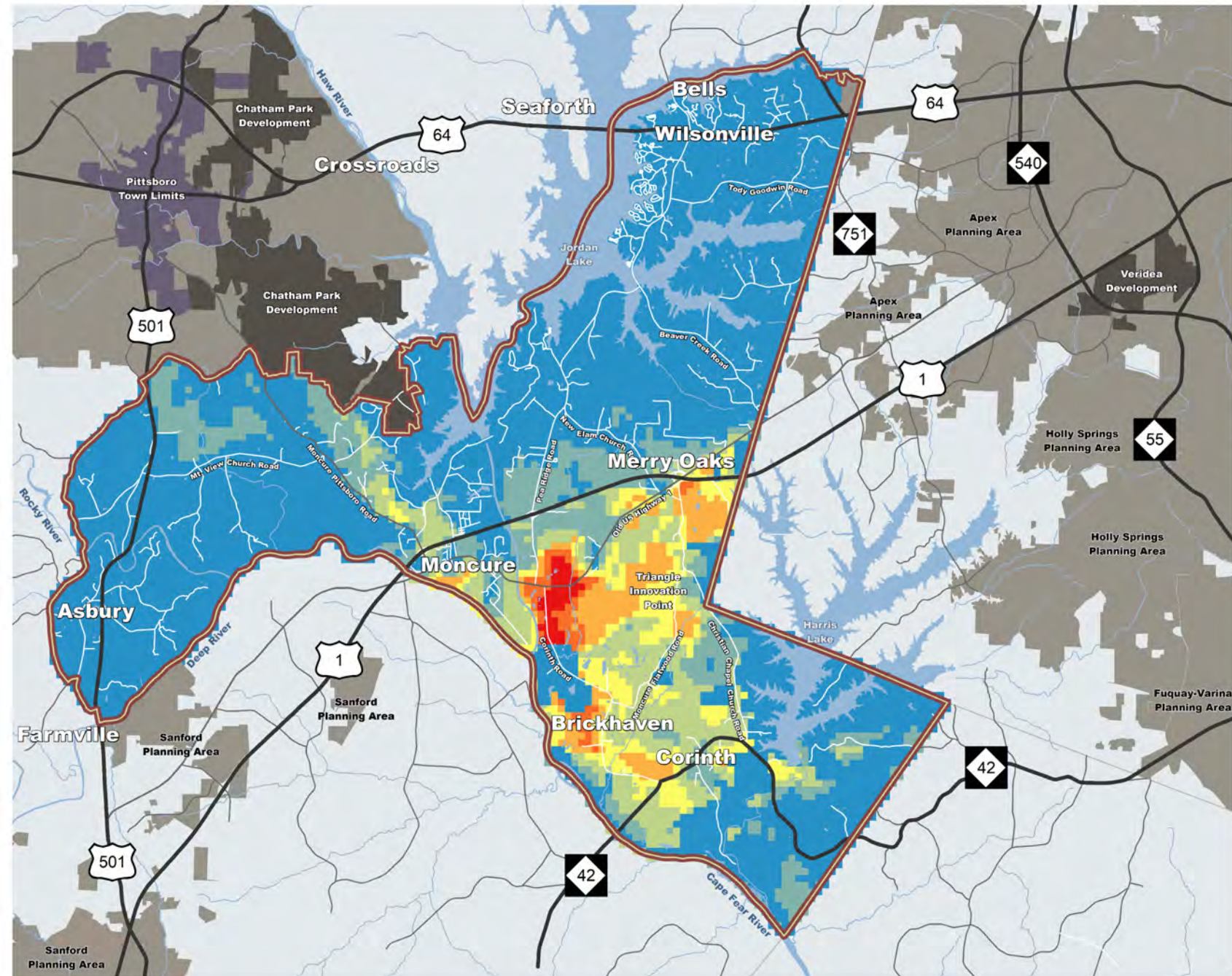
RECODE | PLAN
CHATHAM | MONCURE

Industrial Suitability



- Unincorporated County
- Pittsboro Town Limits
- Town Planning Area
- Major Activity Center

March 15, 2023



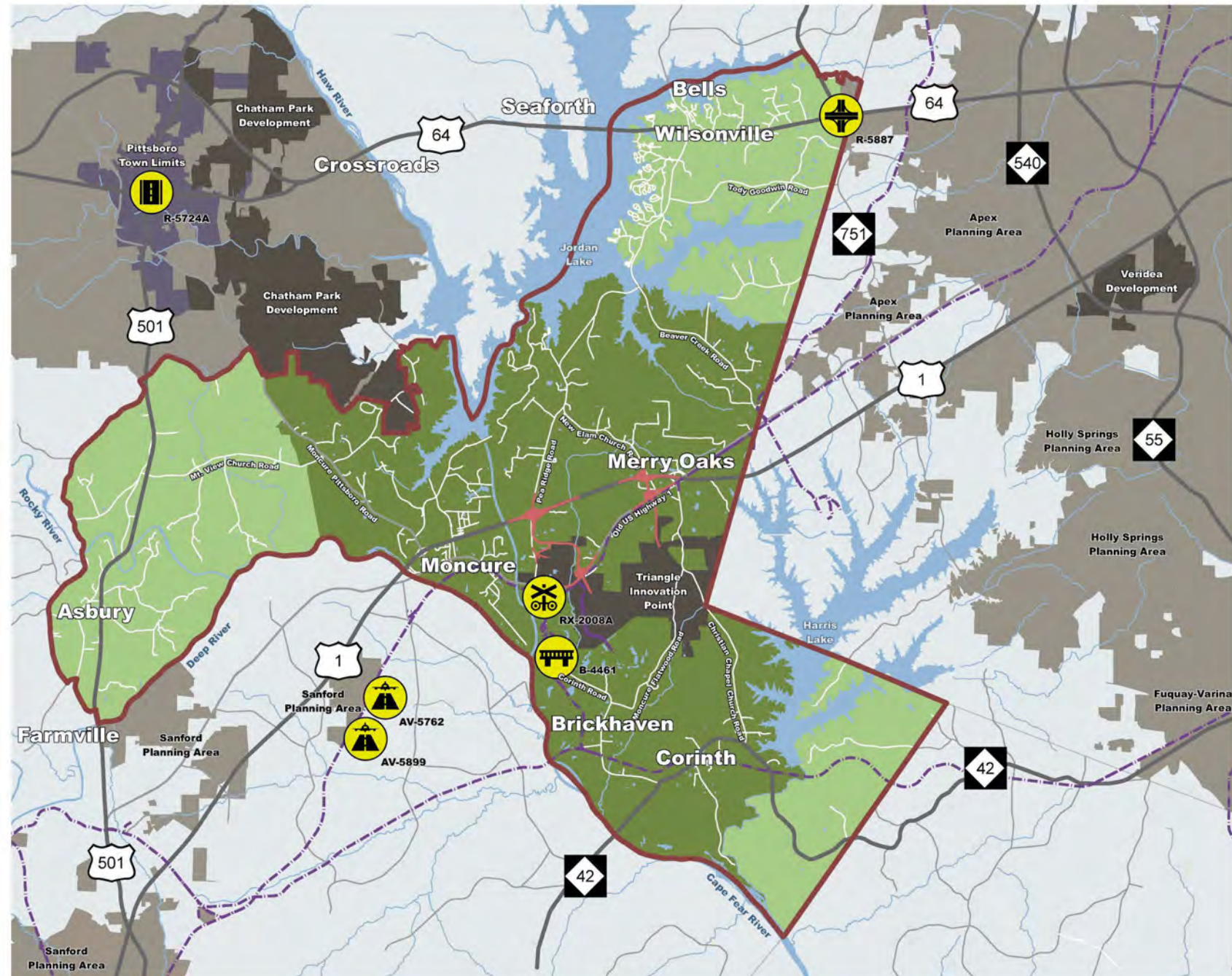
**Existing and Planned
Transportation Network
Map**

-  Road Improvements Underway
-  Unincorporated County
-  Pittsboro Town Limits
-  Town Planning Area
-  Major Activity Center
-  Moncure Small Area Plan Study Area
-  Moncure Small Area Plan Focus Area
-  Water Body
-  State Transportation Improvement Projects, 2020-2029
-  Railroad

March 15, 2023



NORTH



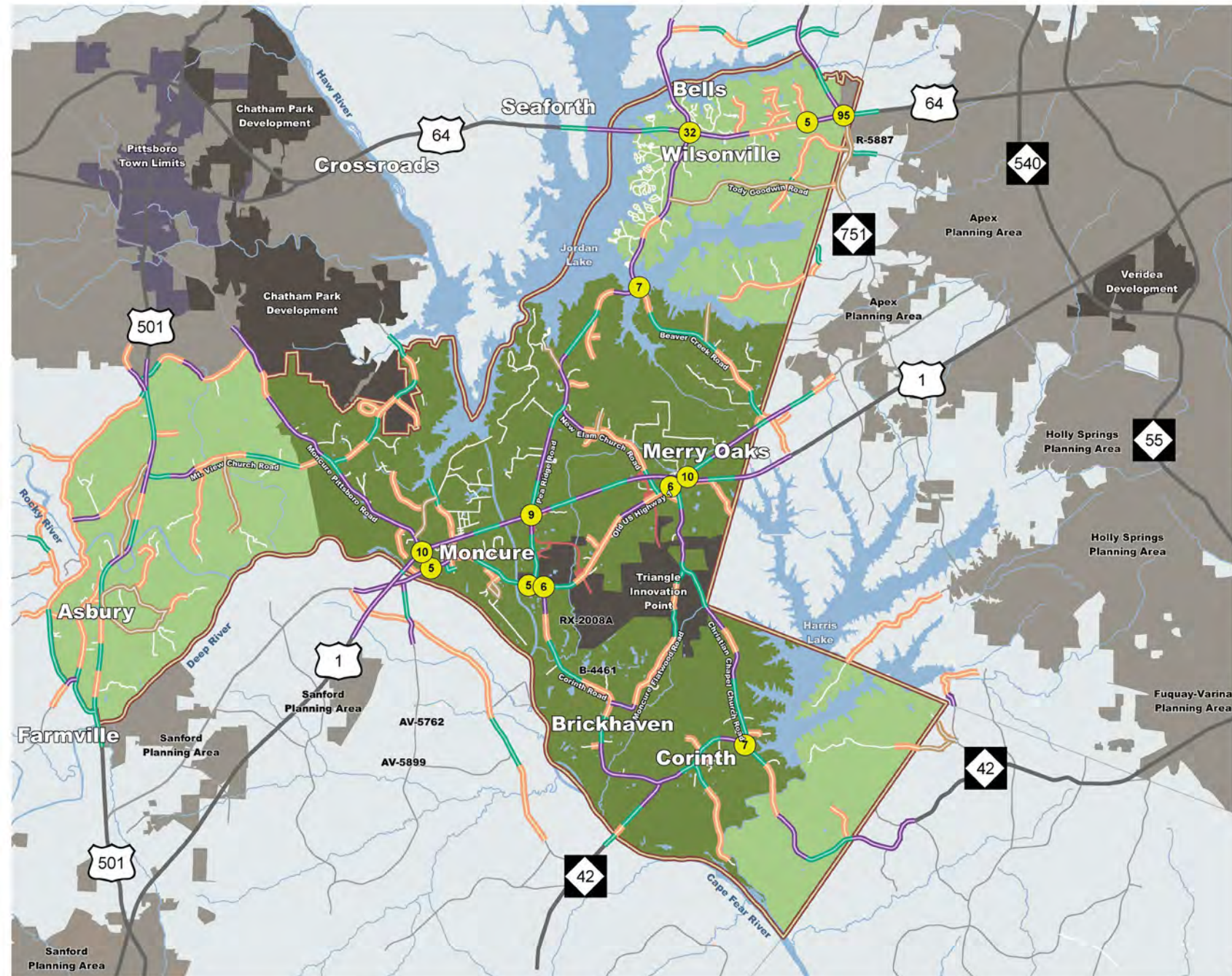
**Transportation Safety
Conditions Map**

- Road Improvements Underway
- Unincorporated County
- Pittsboro Town Limits
- Town Planning Area
- Major Activity Center
- Moncure Small Area Plan Study Area
- Moncure Small Area Plan Focus Area
- Water Body
- High-Crash Frequency Location
(Number of Crashes Noted with Labels)
- ~ Combined Safety Rating, 0 to 33
- ~ Combined Safety Rating, 33 to 66
- ~ Combined Safety Rating, 66 to 100
- ~ Combined Safety Rating, Less than 60% Mileposted

March 20, 2023



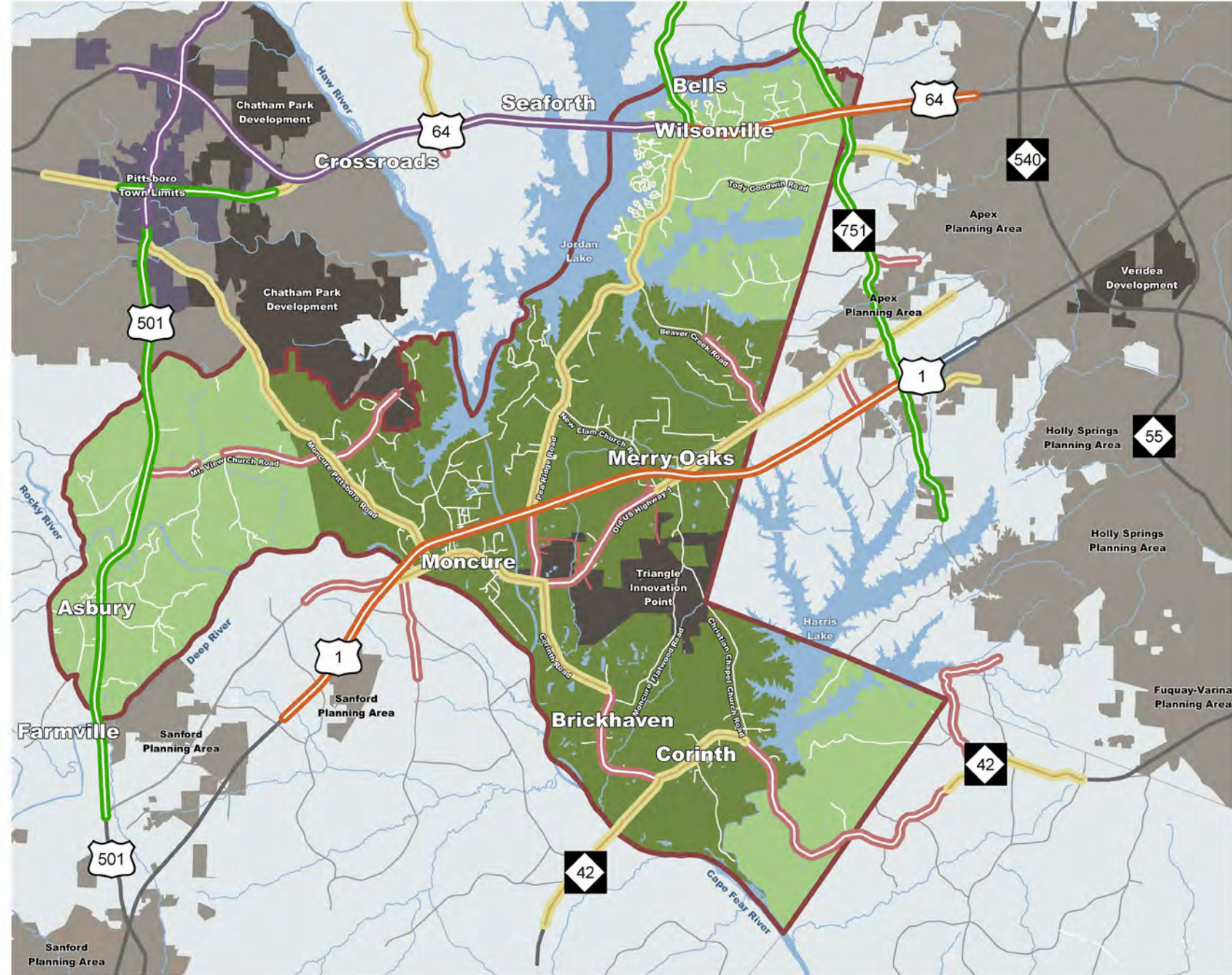
NORTH



**2021 Average Daily
Traffic Volume Counts**

- Road Improvements Underway
- Unincorporated County
- Pittsboro Town Limits
- Town Planning Area
- Major Activity Center
- Moncure Small Area Plan Study Area
- Moncure Small Area Plan Focus Area
- Water Body
- 35,000 to 54,999 Vehicles per Day
- 20,000 to 34,999 Vehicles per Day
- 10,000 to 19,999 Vehicles per Day
- 5,000 to 9,999 Vehicles per Day
- 2,000 to 4,999 Vehicles per Day
- 500 to 1,999 Vehicles per Day

March 15, 2023



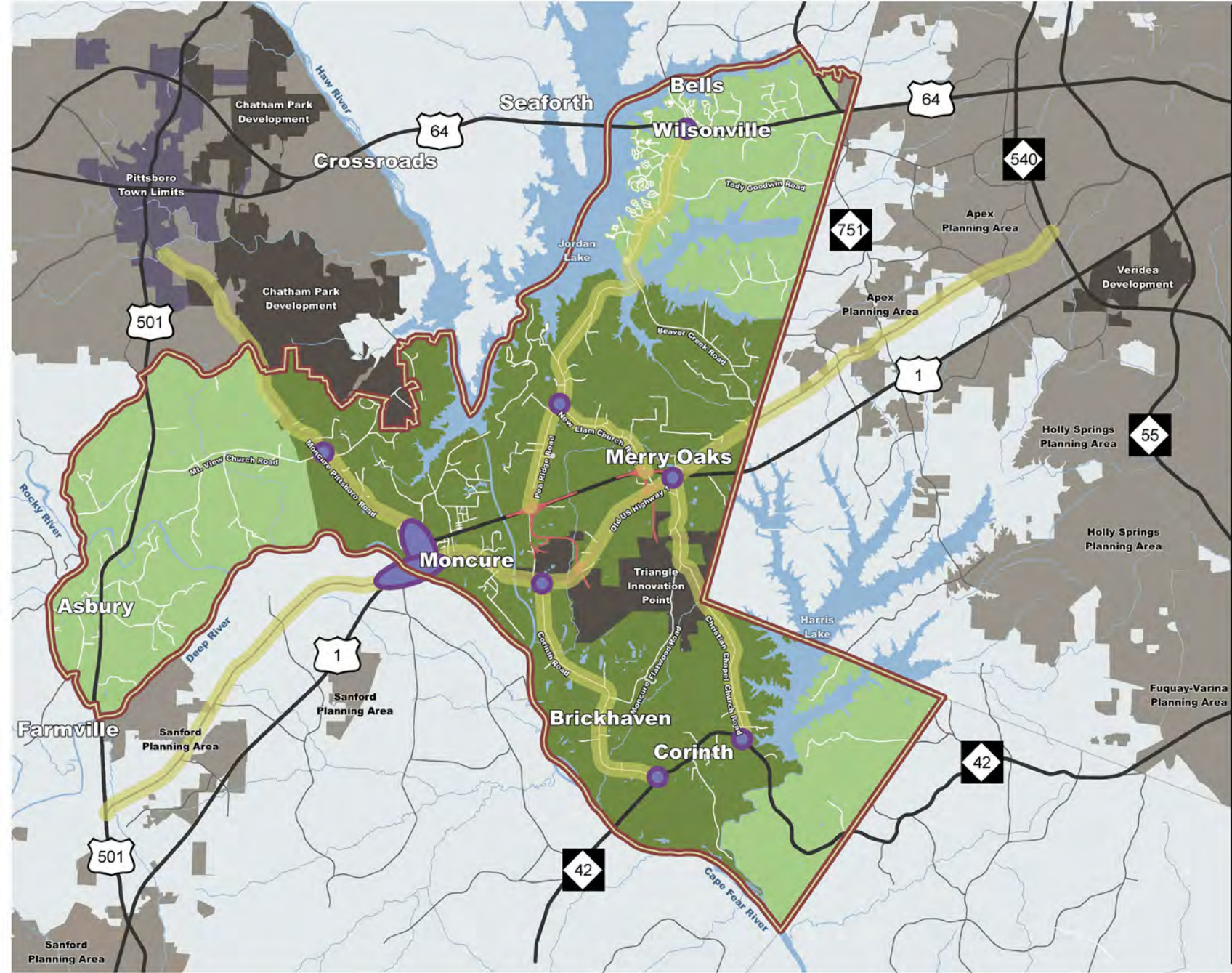
Near-Term Needs for the
Transportation System

- Road Improvements Underway
- Unincorporated County
- Pittsboro Town Limits
- Town Planning Area
- Major Activity Center
- Moncure Small Area Plan Study Area
- Moncure Small Area Plan Focus Area
- Water Body
- Transportation, Points of Interest
- Transportation, Corridors of Interest

March 15, 2023



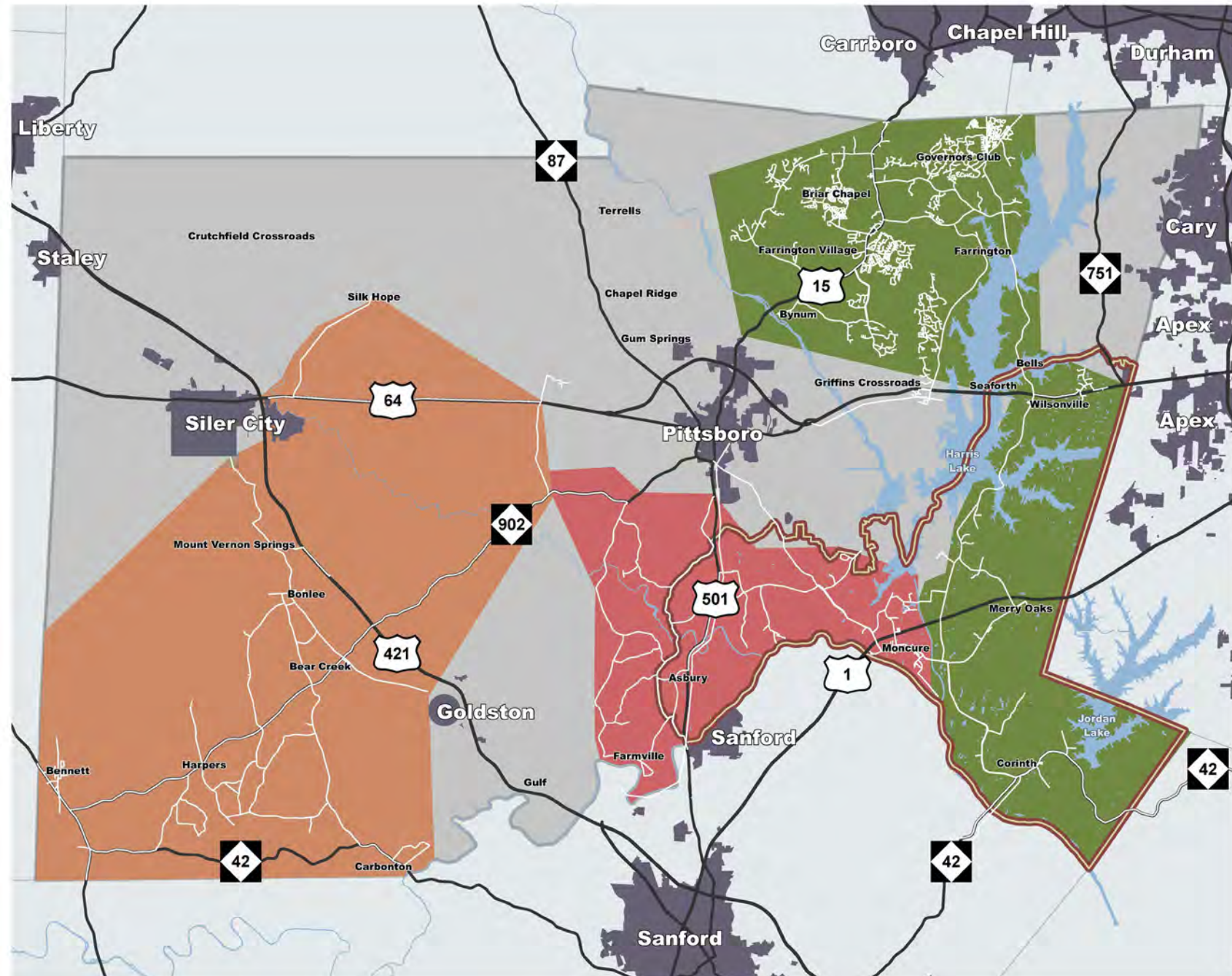
NORTH



RECODE | PLAN
CHATHAM | MONCURE

Water Service Area Map

- Asbury Water Service Area
- North Water Service Area
- Southwest Water Service Area
- Municipal Limits
- Chatham County
- Surrounding Counties
- Water Bodies
- Moncure Small Area Plan Study Area Boundary
- Major Roads
- Existing Water Lines



March 14, 2023



Future Land Use Map

- Parks and Protected Land
- Conservation
- Agriculture and Woodlands
- Rural
- Neighborhood Residential
- Compact Residential
- Crossroads Community
- Village Center
- Community Center
- Employment Center
- Water Bodies
- Perennial Streams
- Triangle Innovation Point
- Pittsboro Town Limits
- Chatham Park Development
- Long-Term Activity Centers
- Planning Area Boundary
- Town of Apex Annexation Area, Includes Areas in Black 2023

November 16, 2023

